



VISIONISM DESIGN STUDIO +86-757-83358609



GUANGDONG BAIHE MEDICAL TECHNOLOGY CO.,LTD.

Address: No. 89, Taoyuan East Road, Nanhai, Foshan, Guangdong , China

Tel: +86-757-81207300 ext. 307; or+86-757-81207302
Fax: +86-757-81207311

Email Address: able@baihemedical.com
sales@baihemedical.com

Website: <http://www.baihemedical.com>



FOCUS ON QUALITY
RESPECT FOR LIFE

Provide comprehensive medical solutions.



Company Profile

Established in 1999, Baihe Medical is one of the leading medical device manufacturers in the South of China, specialized in medical disposables for use in anesthesia, blood purification, infusion and wound care.

With total 1200 employees and land occupation over 40,000 square meters, Baihe Medical's headquarter locates in Southern Medical Industrial park, Foshan City, Guangdong Province, 200 kilometers away from Hong Kong. Baihe Medical currently operates 6 manufacturing plants, meanwhile she has 4 wholly-owned subsidiary companies, including Biosun Medical, United Medical, Jiakang Medical and Dihua Precision Moulding.

The Quality Assurance System is certified and correspondent with ISO-13485, ISO 9001. More than 20 products are certified with CE mark. Central Venous Catheter and Hemodialysis Catheter can be marketed in USA. Baihe is the biggest manufacturer of two above mentioned products in terms of production capacity in China.

The company upholds “ Focusing on Quality, Respect for Life”, dedicating to becoming one of the leading suppliers of medical device.





Category



A. Anesthetic Products

1. Central Venous Catheter...P01
2. Antimicrobial Central Venous Catheter.....P05
3. Endotracheal Tube.....P06
4. Drainage Catheter.....P07
5. Pressure Transducer.....P09
6. PICC.....P12



B. Blood Purification Products

1. Hemodialysis Catheter....P13
2. Long Term Hemodialysis Catheter.....P17
3. Blood Line.....P18
4. A.V.Fistula Needle & Safety Fistula Needle.....P19
5. Hemodialyser(Low flux polyethersulfone).....P20
6. Hemoperfusion Cartridge...P21
7. Highly Specific Bilirubin Absorption Column.....P23



C. Infusion Products

1. Needle Free Connector...P25
2. Y-port Valves & Tube End Valves.....P26
3. Positive Pressure Needle Free Connector.....P27
4. Neutral Pressure Needle Free Connector.....P28
5. I.V.Cannula.....P29
6. Extension Tube With Injection Site Adapters....P30
7. Three Way Stopcock & Extension Tube.....P31
8. Nasogastric Feeding Tube...P32
9. Silicone Foley Catheter...P33



D. Wound Care Products

1. Alginate Wound Dressing...P35
2. Wound closure Device....P36
3. Chitosan.....P37
4. Carboxymethyl Cellulose(CMC).....P38



E. Guide Wire and Other Accessories

1. Nitinol Guide Wire.....P39
2. Stainless Steel Guide Wire...P39
3. Guide wire for Nasogastric Feeding Tube.....P40
4. PTFE Guide Wire.....P40
5. Individual Catheter.....P41
6. Heparin Cap.....P41
7. Introducer Needle.....P42
8. Dilator.....P42
9. Introducer Syringe.....P42
10. Scalpel.....P42
11. Fixation with Wings.....P42
12. Slide Clamp.....P42

Anesthetic Products



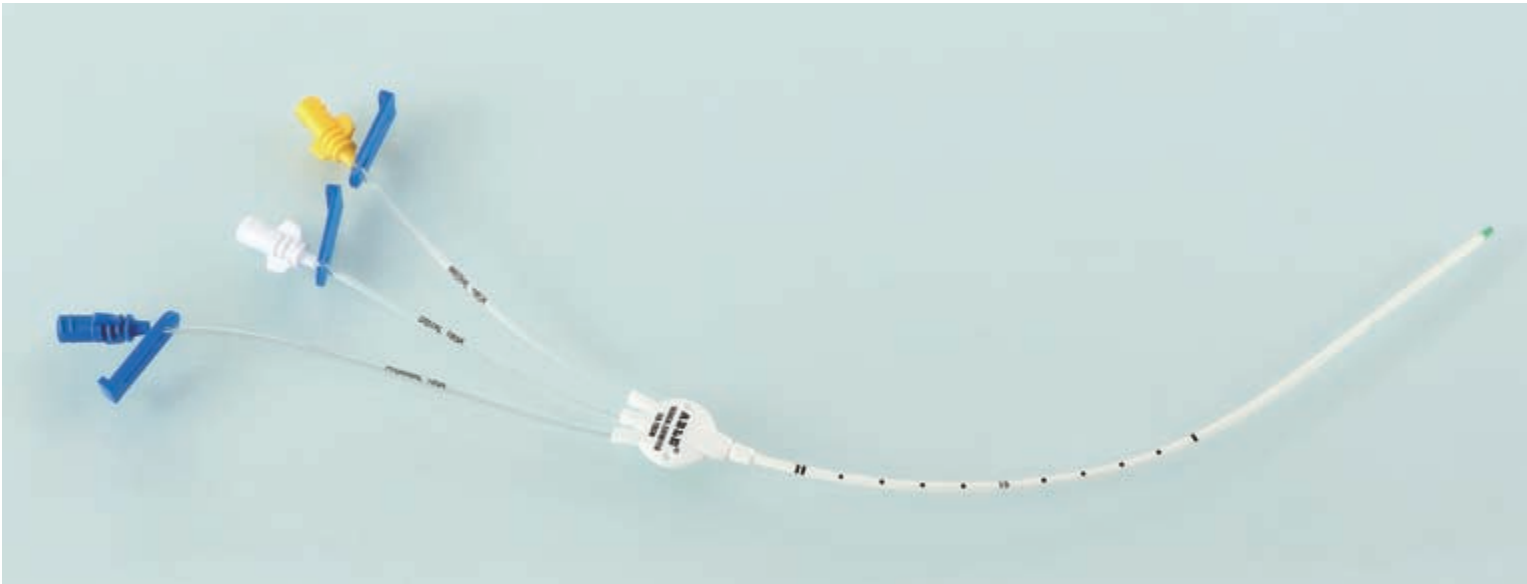
Standard Kits include:

- 1. Central Venous Catheter
- 2. Guide-wire
- 3. Vessel Dilator
- 4. Clamp
- 5. Fastener: Catheter Clamp
- 6. Introducer Needle
- 7. Introducer Syringe
- 8. Injection Needle
- 9. Injection Cap

Optional Compound Kits include:

- 1. Central Venous Catheter Standard Kit Accessories
- 2. 5ml Syringe
- 3. Surgical Gloves
- 4. Surgical Pledget
- 5. Surgery Sheet
- 6. Surgery Towel
- 7. Sterile Brush
- 8. Gauze Pad
- 9. Suture of Needle
- 10. Wound Dressing
- 11. Scalpel

Central Venous Catheter



Movable clamp allows anchorage at puncture site regardless of depth of catheter, which minimizes trauma and irritation to the puncturing site. Depth marking assists in accurate placement of central venous catheter from the right or left subclavian or jugular vein. Soft tip reduces trauma to vessel, minimizing vessel erosion, hemothorax and cardiac tamponade. Single, double, triple and quad lumen is available for choice. Radiopacity facilitates confirmation of catheter placement. The multi-lumen version's tips are more radiopaque, which makes it easy to confirm the placement of fluoroscopic tip. Vessel dilator ensures "super soft" catheters to be easily placed percutaneously.

Optional

Alternative

Compound-packaging Tray



Triangle Hub



Straight or Y-shaped Type Puncture Needle.



Nitinol or Stainless Steel Guide-wire with Flexible J-tip



Sharp Scalpel



ECG Cable



Various Accessories for Choice

Order Information

| Product Code | Lumen | Catheter Size | Length (cm) | Dilator | Guidewire | Introducer Needle |
|--------------|--------|---------------|-------------|-----------|-------------|------------------------|
| FV-1221 | Single | 22Ga | 5 | 4F×5cm | 0.018"×50cm | Straight/Y Needle 20Ga |
| FV-1222 | Single | 22Ga | 8 | 4F×5cm | 0.018"×50cm | |
| FV-1223 | Single | 22Ga | 10 | 4F×5cm | 0.018"×50cm | |
| FV-1224 | Single | 22Ga | 13 | 4F×5cm | 0.018"×50cm | |
| FV-122915 | Single | 22Ga | 15 | 4F×5cm | 0.018"×50cm | |
| FV-1225 | Single | 22Ga | 16 | 4F×5cm | 0.018"×50cm | Straight/Y Needle 20Ga |
| FV-1226 | Single | 22Ga | 20 | 4F×5cm | 0.018"×60cm | |
| FV-1228 | Single | 22Ga | 30 | 4F×5cm | 0.018"×70cm | |
| FV-1321 | Single | 20Ga | 5 | 4F×5cm | 0.021"×50cm | |
| FV-1322 | Single | 20Ga | 8 | 4F×5cm | 0.021"×50cm | |
| FV-1323 | Single | 20Ga | 10 | 4F×5cm | 0.021"×50cm | Straight/Y Needle 20Ga |
| FV-1324 | Single | 20Ga | 13 | 4F×5cm | 0.021"×50cm | |
| FV-132915 | Single | 20Ga | 15 | 4F×5cm | 0.021"×50cm | |
| FV-1325 | Single | 20Ga | 16 | 4F×5cm | 0.021"×50cm | |
| FV-1326 | Single | 20Ga | 20 | 4F×5cm | 0.021"×60cm | |
| FV-1328 | Single | 20Ga | 30 | 4F×5cm | 0.021"×70cm | Straight/Y Needle 19Ga |
| FV-1421 | Single | 18Ga | 5 | 5.5F×6cm | 0.025"×50cm | |
| FV-1422 | Single | 18Ga | 8 | 5.5F×6cm | 0.025"×50cm | |
| FV-1423 | Single | 18Ga | 10 | 5.5F×6cm | 0.025"×50cm | |
| FV-1424 | Single | 18Ga | 13 | 5.5F×6cm | 0.025"×50cm | |
| FV-142915 | Single | 18Ga | 15 | 5.5F×6cm | 0.025"×50cm | Straight/Y Needle 18Ga |
| FV-1425 | Single | 18Ga | 16 | 5.5F×6cm | 0.025"×50cm | |
| FV-1426 | Single | 18Ga | 20 | 5.5F×6cm | 0.025"×60cm | |
| FV-1428 | Single | 18Ga | 30 | 5.5F×6cm | 0.025"×70cm | |
| FV-1521 | Single | 16Ga | 5 | 6.5F×10cm | 0.032"×50cm | |
| FV-1522 | Single | 16Ga | 8 | 6.5F×10cm | 0.032"×50cm | Straight/Y Needle 18Ga |
| FV-1523 | Single | 16Ga | 10 | 6.5F×10cm | 0.032"×50cm | |
| FV-1524 | Single | 16Ga | 13 | 6.5F×10cm | 0.032"×50cm | |
| FV-152915 | Single | 16Ga | 15 | 6.5F×10cm | 0.032"×50cm | |
| FV-1525 | Single | 16Ga | 16 | 6.5F×10cm | 0.032"×50cm | |
| FV-1526 | Single | 16Ga | 20 | 6.5F×10cm | 0.032"×60cm | Straight/Y Needle 18Ga |
| FV-1528 | Single | 16Ga | 30 | 6.5F×10cm | 0.032"×70cm | |

| Product Code | Lumen | Catheter Size | Length (cm) | Dilator | Guidewire | Introducer Needle |
|--------------|--------|---------------|-------------|-----------|-------------|------------------------|
| FV-1624 | Single | 14Ga | 13 | 8.5F×10cm | 0.032"×50cm | Straight/Y Needle 18Ga |
| FV-162915 | Single | 14Ga | 15 | 8.5F×10cm | 0.032"×50cm | |
| FV-1625 | Single | 14Ga | 16 | 8.5F×10cm | 0.032"×50cm | |
| FV-1626 | Single | 14Ga | 20 | 8.5F×10cm | 0.032"×60cm | |
| FV-1628 | Single | 14Ga | 30 | 8.5F×10cm | 0.032"×70cm | |
| FV/FC-2421 | Double | 4Fr | 5 | 5.5F×6cm | 0.018"×50cm | Straight/Y Needle 20Ga |
| FV/FC-2422 | Double | 4Fr | 8 | 5.5F×6cm | 0.018"×50cm | |
| FV/FC-2423 | Double | 4Fr | 10 | 5.5F×6cm | 0.018"×50cm | |
| FV/FC-2424 | Double | 4Fr | 13 | 5.5F×6cm | 0.018"×50cm | |
| FV/FC-242915 | Double | 4Fr | 15 | 5.5F×6cm | 0.018"×50cm | |
| FV/FC-2425 | Double | 4Fr | 16 | 5.5F×6cm | 0.018"×50cm | Straight/Y Needle 20Ga |
| FV/FC-2426 | Double | 4Fr | 20 | 5.5F×6cm | 0.018"×60cm | |
| FV/FC-2428 | Double | 4Fr | 30 | 5.5F×6cm | 0.018"×70cm | |
| FV/FC-2521 | Double | 5Fr | 5 | 6F×7cm | 0.021"×50cm | |
| FV/FC-2522 | Double | 5Fr | 8 | 6F×7cm | 0.021"×50cm | |
| FV/FC-2523 | Double | 5Fr | 10 | 6F×7cm | 0.021"×50cm | Straight/Y Needle 20Ga |
| FV/FC-2524 | Double | 5Fr | 13 | 6F×7cm | 0.021"×50cm | |
| FV/FC-252915 | Double | 5Fr | 15 | 6F×7cm | 0.021"×50cm | |
| FV/FC-2525 | Double | 5Fr | 16 | 6F×7cm | 0.021"×50cm | |
| FV/FC-2526 | Double | 5Fr | 20 | 6F×7cm | 0.021"×60cm | |
| FV/FC-2528 | Double | 5Fr | 30 | 6F×7cm | 0.021"×70cm | Straight/Y Needle 18Ga |
| FV/FC-2724 | Double | 7Fr | 13 | 8.5F×10cm | 0.035"×50cm | |
| FV/FC-272915 | Double | 7Fr | 15 | 8.5F×10cm | 0.035"×50cm | |
| FV/FC-2725 | Double | 7Fr | 16 | 8.5F×10cm | 0.035"×50cm | |
| FV/FC-2726 | Double | 7Fr | 20 | 8.5F×10cm | 0.035"×60cm | |
| FV/FC-2728 | Double | 7Fr | 30 | 8.5F×10cm | 0.035"×70cm | Straight/Y Needle 18Ga |
| FV-2824 | Double | 8Fr | 13 | 9F×10cm | 0.035"×50cm | |
| FV-282915 | Double | 8Fr | 15 | 9F×10cm | 0.035"×50cm | |
| FV-2825 | Double | 8Fr | 16 | 9F×10cm | 0.035"×50cm | |
| FV-2826 | Double | 8Fr | 20 | 9F×10cm | 0.035"×50cm | |
| FV-2828 | Double | 8Fr | 30 | 9F×10cm | 0.035"×50cm | |

Order Information

| Product Code | Lumen | Catheter Size | Length (cm) | Dilator | Guidewire | Introducer Needle |
|--------------|--------|---------------|-------------|---------------|-------------|------------------------|
| FV-2921 | Double | 8.5Fr | 5 | 9F×10cm | 0.035"×50cm | Straight/Y Needle 18Ga |
| FV-2922 | Double | 8.5Fr | 8 | 9F×10cm | 0.035"×50cm | |
| FV-2923 | Double | 8.5Fr | 10 | 9F×10cm | 0.035"×50cm | |
| FV-2924 | Double | 8.5Fr | 13 | 9F×10cm | 0.035"×50cm | |
| FV-2925 | Double | 8.5Fr | 16 | 9F×10cm | 0.035"×50cm | |
| FV-2926 | Double | 8.5Fr | 20 | 9F×10cm | 0.035"×60cm | Straight/Y Needle 20Ga |
| FV-2927 | Double | 8.5Fr | 25 | 9F×10cm | 0.035"×60cm | |
| FV-2928 | Double | 8.5Fr | 30 | 9F×10cm | 0.035"×70cm | |
| FV/FC-3421 | Triple | 4.5Fr | 5 | 6F×5cm/6F×7cm | 0.021"×50cm | |
| FV/FC-3422 | Triple | 4.5Fr | 8 | 6F×5cm/6F×7cm | 0.021"×50cm | |
| FV/FC-3423 | Triple | 4.5Fr | 10 | 6F×5cm/6F×7cm | 0.021"×50cm | Straight/Y Needle 20Ga |
| FV/FC-3424 | Triple | 4.5Fr | 13 | 6F×5cm/6F×7cm | 0.021"×50cm | |
| FV/FC-342915 | Triple | 4.5Fr | 15 | 6F×5cm/6F×7cm | 0.021"×50cm | |
| FV/FC-3425 | Triple | 4.5Fr | 16 | 6F×5cm/6F×7cm | 0.021"×50cm | |
| FV/FC-3426 | Triple | 4.5Fr | 20 | 6F×5cm/6F×7cm | 0.021"×60cm | |
| FV/FC-3428 | Triple | 4.5Fr | 30 | 6F×5cm/6F×7cm | 0.021"×70cm | Straight/Y Needle 20Ga |
| FV/FC-3521 | Triple | 5.5Fr | 5 | 6.5F×10cm | 0.021"×50cm | |
| FV/FC-3522 | Triple | 5.5Fr | 8 | 6.5F×10cm | 0.021"×50cm | |
| FV/FC-3523 | Triple | 5.5Fr | 10 | 6.5F×10cm | 0.021"×50cm | |
| FV/FC-3524 | Triple | 5.5Fr | 13 | 6.5F×10cm | 0.021"×50cm | |
| FV/FC-352915 | Triple | 5.5Fr | 15 | 6.5F×10cm | 0.021"×50cm | Straight/Y Needle 18Ga |
| FV/FC-3525 | Triple | 5.5Fr | 16 | 6.5F×10cm | 0.021"×50cm | |
| FV/FC-3526 | Triple | 5.5Fr | 20 | 6.5F×10cm | 0.021"×60cm | |
| FV/FC-3528 | Triple | 5.5Fr | 30 | 6.5F×10cm | 0.021"×70cm | |
| FV/FC-3724 | Triple | 7Fr | 13 | 8.5F×10cm | 0.035"×50cm | |
| FV/FC-372915 | Triple | 7Fr | 15 | 8.5F×10cm | 0.035"×50cm | Straight/Y Needle 18Ga |
| FV/FC-3725 | Triple | 7Fr | 16 | 8.5F×10cm | 0.035"×50cm | |
| FV/FC-3726 | Triple | 7Fr | 20 | 8.5F×10cm | 0.035"×60cm | |
| FV/FC-3728 | Triple | 7Fr | 30 | 8.5F×10cm | 0.035"×70cm | |

| Product Code | Lumen | Catheter Size | Length (cm) | Dilator | Guidewire | Introducer Needle |
|--------------|--------|---------------|-------------|---------|-------------|------------------------|
| FV/FC-3924 | Triple | 8.5Fr | 13 | 9F×10cm | 0.035"×50cm | Straight/Y Needle 18Ga |
| FV/FC-392915 | Triple | 8.5Fr | 15 | 9F×10cm | 0.035"×50cm | |
| FV/FC-3925 | Triple | 8.5Fr | 16 | 9F×10cm | 0.035"×50cm | |
| FV/FC-3926 | Triple | 8.5Fr | 20 | 9F×10cm | 0.035"×60cm | |
| FV/FC-3928 | Triple | 8.5Fr | 30 | 9F×10cm | 0.035"×70cm | |
| FV-4921 | Quad | 8.5Fr | 5 | 9F×10cm | 0.035"×50cm | Straight/Y Needle 18Ga |
| FV-4922 | Quad | 8.5Fr | 8 | 9F×10cm | 0.035"×50cm | |
| FV-4923 | Quad | 8.5Fr | 10 | 9F×10cm | 0.035"×50cm | |
| FV-4924 | Quad | 8.5Fr | 13 | 9F×10cm | 0.035"×50cm | |
| FV-492915 | Quad | 8.5Fr | 15 | 9F×10cm | 0.035"×50cm | |
| FV-4925 | Quad | 8.5Fr | 16 | 9F×10cm | 0.035"×50cm | Straight/Y Needle 18Ga |
| FV-4926 | Quad | 8.5Fr | 20 | 9F×10cm | 0.035"×50cm | |
| FV-4928 | Quad | 8.5Fr | 30 | 9F×10cm | 0.035"×50cm | |

Remarks:

1. The product codes in this chart are for CVC kits with straight introducer needle configuration.
2. CVC kits with Y-shaped introducer needle configuration are also available in adult types. The product code of CVC kit with Y-shaped introducer needle configuration is to add letter "Y" after the product code of CVC kit with straight introducer needle configuration, for example, "FC-2726Y". Before you order, please clarify which configuration you request, either straight or Y-shape introducer needle.
3. Pediatric types of CVC include single lumen 22Ga, 20Ga, 18Ga ; double lumen 4Fr, 5Fr ; triple lumen 4.5Fr and triple lumen 5.5Fr.
4. Adult types of CVC include single lumen 16Ga, 14Ga ; double lumen 7Fr, 8Fr, 8.5Fr ; triple lumen 7Fr, 8.5Fr and quad lumen 8.5Fr.
5. "FV" in the product code for single lumen CVC means with cylinder hub.
6. "FC" in the product code for double lumen, triple lumen, quad lumen CVC means with triangular hub. "FV" in the product code for double lumen, triple lumen, quad lumen CVC means with round hub.

Antimicrobial Central Venous Catheter



Mechanism

The tubing is made from polyurethane which mixed with silver-containing zirconium phosphate at nanometer level, when the catheter ys placed into the body, Ag+ will be released to inhibit bacteria growing.

The effect to the bacteria infection of burn wound

The chance of infection caused by ordinary central venous catheter is 4.5%, 80% of infection is caused by bacteria on the skin surface entering the blood through the catheter puncture site. the typical bacteria are the ant-thrombin staphylococcus, enterococcus and candida. The anti microbial central venous catheter is effective to inhibit bacteria growing, especially Gram-positive bacteria, gram-negative bacteria and fungus. the form below indicates the anti-bacterial rate of typical bacteria.

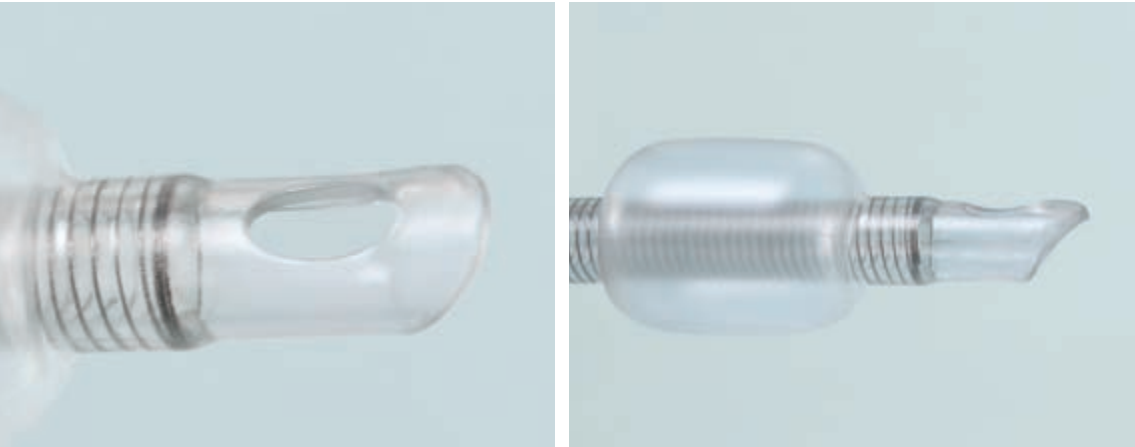
The benefits of anti microbial central venous catheter

1. The anti microbial central venous is effective to inhibit the growth of bacteria, it can reduce 80% of related infection of ordinary central venous catheter, 10%-20% mortality which was caused by the infection and 75% of bacteremia.
2. The anti microbial central venous catheter can be planted into the body longer than the ordinary catheter. It is non-toxic to human as the mechanism is different from the antibiotics. Thus, it is not easy to cause drug resistance of bacterial.

Anti-bacterial rate of 20mm Diameter Bacterial inhibited cycle.

| Typical bacteria | Anti-bacterial rate |
|-----------------------|---------------------|
| Staphylococcus aureus | 99.99% |
| Escherichia coli | >99.99% |
| Candida | >99.99% |

Endotracheal Tube



Characteristics:

1. The bevel of patient end is standard angle and is melted smoothly without burr.
2. The border of Murphy eye is smooth and without sharp angle.
3. The cuff is soft, long and wide. The feature of high volume and low pressure can reduce the trauma to mucosa.
4. The connection between cuff and main tube is smooth and without sharp angle, the chance of trauma to mucosa can be reduced during the insertion.
5. The tube is made from thermosensitive material, it will become soft after being inserted into the trachea without trauma to trachea. The hardness and elasticity of tube ys moderate, thus, tube is uneasy to be bended.

Order Information

| Product Code | Size(mm)/Cuffed | Product Code | Size(mm)/Cuffed |
|--------------|-----------------|--------------|-----------------|
| ET-1111003 | 3.0 | ET-1110001 | 2.0 |
| ET-1111004 | 3.5 | ET-1110002 | 2.5 |
| ET-1111005 | 4.0 | ET-1110003 | 3.0 |
| ET-1111006 | 4.5 | ET-1110004 | 3.5 |
| ET-1111007 | 5.0 | ET-1110005 | 4.0 |
| ET-1111008 | 5.5 | ET-1110006 | 4.5 |
| ET-1111009 | 6.0 | ET-1110007 | 5.0 |
| ET-1111010 | 6.5 | ET-1110008 | 5.5 |
| ET-1111011 | 7.0 | ET-1110009 | 6.0 |
| ET-1111012 | 7.5 | ET-1110010 | 6.5 |
| ET-1111013 | 8.0 | ET-1110011 | 7.0 |
| ET-1111014 | 8.5 | ET-1110012 | 7.5 |
| ET-1111015 | 9.0 | ET-1110013 | 8.0 |
| ET-1111016 | 9.5 | ET-1110014 | 8.5 |
| ET-1111017 | 10.0 | ET-1110015 | 9.0 |
| ET-1111018 | 10.5 | ET-1110016 | 9.5 |
| ET-1111019 | 11.0 | ET-1110017 | 10.0 |
| ET-1211010 | 6.5(Oral) | ET-1110018 | 10.5 |
| ET-1311008 | 5.5(Nasal) | ET-1110019 | 11.0 |

Anesthetic Products



Standard Kits include:

- 1. Drainage Catheter
- 2. Guide-wire
- 3. Vessel Dilator
- 4. Introducer Needle
- 5. Introducer Syringe
- 6. Injection Needle
- 7. Injection Cap
- 8. Connecting tube

Optional Compound Kits include:

- 1. Drainage Catheter
- Standard Kit Accessories
- 2. 5ml Syringe
- 3. Surgical Gloves
- 4. Surgical Pledget
- 5. Surgery Sheet
- 6. Surgery Towel
- 7. Sterile Brush
- 8. Gauze Pad
- 9. Suture of Needle
- 10. Wound Dressing
- 11. Scalpel

Drainage Catheter



Catheter
Special PUR material with great biocompatibility avoids catheter adhere and block; the catheter is soft with small irritation and great crease resistance. It can soften in human body so the patients can feel more comfortable.

Catheter Tube
The catheter tube is radiopaque under X-ray and graduation marked, so it is easy to master the depth of the catheter placement.

Catheter Placement
The catheter placement operation is safer to reduce the chance of infection during minimally invasive surgery with guidewire use. The guidewire front end is naturally curved so it is not easy to injure splanchnocoele viscera.

Catheter Front End
The catheter front end has two different designs. 1.Straight design. 2. Pigtail twisted design with smooth built-in and outside and additional side hole on the low-lying side. This design can avoid catheter wall sucked and blocked, and it can increase drainage area.

Order Information

| Product Code | Specification of Product | Dilator | Guidewire | Shape |
|--------------|-------------------------------|---------|--------------|----------|
| FY-1616 | Single Lumen 6Fr(14Ga)x 20cm | 8Fr | .035 x 60 cm | Straight |
| FY-1616w | Single Lumen 6Fr(14Ga)x 20cm | 8Fr | .035 x 60 cm | Curved |
| FY-1618 | Single Lumen 6Fr(14Ga)x 20cm | 8Fr | .035 x 70 cm | Straight |
| FY-1618w | Single Lumen 6Fr(14Ga)x 20cm | 8Fr | .035 x 70 cm | Curved |
| FY-1816 | Single Lumen 8Fr(12Ga)x 20cm | 9Fr | .035 x 60 cm | Straight |
| FY-1816w | Single Lumen 8Fr(12Ga)x 20cm | 9Fr | .035 x 60 cm | Curved |
| FY-1818 | Single Lumen 8Fr(12Ga)x 20cm | 9Fr | .035 x 70 cm | Straight |
| FY-1818w | Single Lumen 8Fr(12Ga)x 20cm | 9Fr | .035 x 70 cm | Curved |
| FY-1016 | Single Lumen 10Fr(11Ga)x 20cm | 10Fr | .035 x 60 cm | Straight |
| FY-1016w | Single Lumen 10Fr(11Ga)x 20cm | 10Fr | .035 x 60 cm | Curved |
| FY-1018 | Single Lumen 10Fr(11Ga)x 20cm | 10Fr | .035 x 70 cm | Straight |
| FY-1018w | Single Lumen 10Fr(11Ga)x 20cm | 10Fr | .035 x 70 cm | Curved |
| FY-1216 | Single Lumen 12Fr(10Ga)x 20cm | 12Fr | .035 x 60 cm | Straight |
| FY-1216w | Single Lumen 12Fr(10Ga)x 20cm | 12Fr | .035 x 60 cm | Curved |
| FY-1218 | Single Lumen 12Fr(10Ga)x 20cm | 12Fr | .035 x 70 cm | Straight |
| FY-1218w | Single Lumen 12Fr(10Ga)x 20cm | 12Fr | .035 x 70 cm | Curved |

Anesthetic Products



Pressure Transducer



Strengths:

- 1. Sensitive chip, accurate data transfer
- 2. Match all kinds of cables

Description:

Disposable Pressure Transducer and its accessories are consisted of medical grade high polymer material and possess advanced biological compatibility, its unique structure and configuration guarantee the product's safety and reliability.

Application:

- 1. Central venous pressure and other various physiological pressure monitoring.
- 2. Blood sampling.
- 3. Neonatus pressure monitoring.

Safety in Use:

- 1. Closed system design reduces the risk of infection of operators.
- 2. Accurate substantial design helps to avoid risk of leaking.
- 3. Needle free blood sample collecting system helps to avoid stabbing and cross infection.

Convenient Operation:

- 1. Simple operation and accurate flow rate control.
- 2. Various Connectors for choice, can be used with different monitors.
- 3. Micro constant flow (2~5cc/25~35cc per hour) helps to guarantee the continuous flowing.



A



M



B



U



D



E

Order Information

| Product Code | Description |
|--------------|------------------|
| 020-FT-A001 | With U connector |
| 021-FT-A001 | With A connector |
| 022-FT-A001 | With D connector |
| 023-FT-A001 | With E connector |
| 024-FT-A001 | With M connector |
| 025-FT-A001 | With B connector |

Arterial Catheter



Straight or Y-shaped Type Puncture Needle.



Nitinol or Stainless Steel Guide-wire

Application

1. Monitor invasive arterial blood pressure
2. Collect blood sample
3. Infusion drug and solution

Characteristics

1. The tube is made of polyurethane with good biocompatibility and it is convenient for catheter placement due to stiff catheter.
2. Standard Seldinger Technique
3. Catheter and guidewire are protected by sheath
4. Nitinol or stainless steel guidewire is available
5. Straight or Y-Shaped introducer needle configuration is available

Specification

| Number of lumen | Catheter diameter | Catheter length |
|-----------------|-------------------|-----------------|
| Single | 18G | 5-50cm |
| Single | 20Ga | |
| single | 22Ga | |

PICC



Characteristics

1. The connector is round and smooth with PASV valve.
 - A) Valve opens inward for sampling under negative pressure.
 - B) Valve opens outward for infusion under positive pressure.
 - C) Valve remains closed to prevent air embolism, blood reflux and clot under normal pressure.
2. The catheter is made from premium silicone, which has excellent biocompatibility.
3. Adjustable length of catheter.
4. Detectable under X ray, the end tip enhances radiopacity.
5. The stylet of catheter ensures placement more convenient and smooth.
6. Variety of kit configuration, nitinol guide wire and positive pressure needless connector is available for choice.

Blood Purification Products



Standard Kits include:

1. Hemodialysis Catheter
2. Vessel Dilator
3. Introducer Needle
4. Syringe
5. Guide-wire
6. Adhesive Wound Dressings
7. Heparin Caps
8. Scalpel
9. Needle with Suture

Optional Compound Kits include:

1. Hemodialysis Catheter Standard Kit Accessories
2. 5ml Syringe
3. Surgical Gloves
4. Surgical Pledget
5. Surgery Sheet
6. Surgery Towel
7. Sterile Brush
8. Gauze Pad

Hemodialysis Catheter



Soft Tip

Tapered tip facilitates ease of insertion without use of peel-away sheath. Reduces vessel trauma during insertion.



Side Holes

2.5cm far from end hole reduces recirculating and wall-suction. Minimizes risk of clot formation.



Radiopaque

Radiopaque, facilitates quick visualization under X-Ray.



Rotatable Suture Wing

Facilitates skin inspection. Avoid blood vessel wall-suction. Minimizes risk of exit infections. No tube-kinking occurred.



Silicone Extension Tube

Increases patient comfort, will not crimp over time, able to visualize fluids.



Multi-lumen available

Single, double, triple lumen.



Compound-packaging Tray

Various Accessories for choice.



Made from PU (medical grade)

Better flexibility and anti-kinking performance.

Pre-curved Type

More comfortable on patients.



Order Information

| Product Code | Lumen | Catheter Size | Catheter Length(cm) | Dilator | Guidewire | Shape of Extension Tube |
|--------------|--------------|---------------|---------------------|---------|-------------|-------------------------|
| FH-1721 | Single Lumen | 7Fr | 5 | 8F×10cm | 0.035"×50cm | Straight |
| FH-1721W | | | | | | Curved |
| FH-1722 | Single Lumen | 7Fr | 8 | 8F×10cm | 0.035"×50cm | Straight |
| FH-1722W | | | | | | Curved |
| FH-1723 | Single Lumen | 7Fr | 10 | 8F×10cm | 0.035"×50cm | Straight |
| FH-1723W | | | | | | Curved |
| FH-1724 | Single Lumen | 7Fr | 13 | 8F×10cm | 0.035"×50cm | Straight |
| FH-1724W | | | | | | Curved |
| FH-1725 | Single Lumen | 7Fr | 16 | 8F×10cm | 0.035"×50cm | Straight |
| FH-1725W | | | | | | Curved |
| FH-1726 | Single Lumen | 7Fr | 20 | 8F×10cm | 0.035"×60cm | Straight |
| FH-1726W | | | | | | Curved |

| Product Code | Lumen | Catheter Size | Catheter Length(cm) | Dilator | Guidewire | Shape of Extension Tube |
|--------------|--------------|---------------|---------------------|---------|-------------|-------------------------|
| FH-1821 | Single Lumen | 8Fr | 5 | 9F×10cm | 0.038"×50cm | Straight |
| FH-1821W | | | | | | Curved |
| FH-1822 | Single Lumen | 8Fr | 8 | 9F×10cm | 0.038"×50cm | Straight |
| FH-1822W | | | | | | Curved |
| FH-1823 | Single Lumen | 8Fr | 10 | 9F×10cm | 0.038"×50cm | Straight |
| FH-1823W | | | | | | Curved |
| FH-1824 | Single Lumen | 8Fr | 13 | 9F×10cm | 0.038"×50cm | Straight |
| FH-1824W | | | | | | Curved |
| FH-1825 | Single Lumen | 8Fr | 16 | 9F×10cm | 0.038"×50cm | Straight |
| FH-1825W | | | | | | Curved |
| FH-1826 | Single Lumen | 8Fr | 20 | 9F×10cm | 0.038"×60cm | Straight |
| FH-1826W | | | | | | Curved |

Order Information

| Product Code | Lumen | Catheter Size | Catheter Length(cm) | Dilator | Guidewire | Shape of Extension Tube |
|--------------|--------------|---------------|---------------------|------------|-------------|-------------------------|
| FR/FH-2621 | Double Lumen | 6.5Fr | 5 | 7F×10cm | 0.021"×50cm | Straight |
| FR/FH-2621W | | | | | | Curved |
| FR/FH-2622 | Double Lumen | 6.5Fr | 8 | 7F×10cm | 0.021"×50cm | Straight |
| FR/FH-2622W | | | | | | Curved |
| FR/FH-2623 | Double Lumen | 6.5Fr | 10 | 7F×10cm | 0.021"×50cm | Straight |
| FR/FH-2623W | | | | | | Curved |
| FR/FH-2624 | Double Lumen | 6.5Fr | 13 | 7F×10cm | 0.021"×50cm | Straight |
| FR/FH-2624W | | | | | | Curved |
| FR/FH-2625 | Double Lumen | 6.5Fr | 16 | 7F×10cm | 0.021"×50cm | Straight |
| FR/FH-2625W | | | | | | Curved |
| FR/FH-2626 | Double Lumen | 6.5Fr | 20 | 7F×10cm | 0.021"×50cm | Straight |
| FR/FH-2626W | | | | | | Curved |
| FR/FH-2921 | Double Lumen | 8.5Fr | 5 | 9F×10cm | 0.025"×50cm | Straight |
| FR/FH-2921W | | | | | | Curved |
| FR/FH-2922 | Double Lumen | 8.5Fr | 8 | 9F×10cm | 0.025"×50cm | Straight |
| FR/FH-2922W | | | | | | Curved |
| FR/FH-2923 | Double Lumen | 8.5Fr | 10 | 9F×10cm | 0.025"×50cm | Straight |
| FR/FH-2923W | | | | | | Curved |
| FR/FH-2924 | Double Lumen | 8.5Fr | 13 | 9F×10cm | 0.025"×50cm | Straight |
| FR/FH-2924W | | | | | | Curved |
| FR/FH-2925 | Double Lumen | 8.5Fr | 16 | 9F×10cm | 0.025"×50cm | Straight |
| FR/FH-2925W | | | | | | Curved |
| FR/FH-2926 | Double Lumen | 8.5Fr | 20 | 9F×10cm | 0.025"×50cm | Straight |
| FR/FH-2926W | | | | | | Curved |
| FR/FH-2124 | Double Lumen | 11.5Fr | 13 | 11.5F×15cm | 0.038"×50cm | Straight |
| FR/FH-2124W | | | | | | Curved |
| FR/FH-2125 | Double Lumen | 11.5Fr | 16 | 11.5F×15cm | 0.038"×50cm | Straight |
| FR/FH-2125W | | | | | | Curved |
| FR/FH-2126 | Double Lumen | 11.5Fr | 20 | 11.5F×15cm | 0.038"×60cm | Straight |
| FR/FH-2126W | | | | | | Curved |
| FR/FH-2127 | Double Lumen | 11.5Fr | 25 | 11.5F×15cm | 0.038"×60cm | Straight |
| FR/FH-2127W | | | | | | Curved |

| Product Code | Lumen | Catheter Size | Catheter Length(cm) | Dilator | Guidewire | Shape of Extension Tube |
|--------------|--------------|---------------|---------------------|----------|-------------|-------------------------|
| FR/FH-2224 | Double Lumen | 12Fr | 13 | 12F×15cm | 0.038"×50cm | Straight |
| FR/FH-2224W | | | | | | Curved |
| FR/FH-2225 | Double Lumen | 12Fr | 16 | 12F×15cm | 0.038"×50cm | Straight |
| FR/FH-2225W | | | | | | Curved |
| FR/FH-2226 | Double Lumen | 12Fr | 20 | 12F×15cm | 0.038"×60cm | Straight |
| FR/FH-2226W | | | | | | Curved |
| FR/FH-2524 | Double Lumen | 14Fr | 13 | 14F×15cm | 0.038"×50cm | Straight |
| FR/FH-2524W | | | | | | Curved |
| FR/FH-2525 | Double Lumen | 14Fr | 16 | 14F×15cm | 0.038"×60cm | Straight |
| FR/FH-2525W | | | | | | Curved |
| FR/FH-2526 | Double Lumen | 14Fr | 20 | 14F×15cm | 0.038"×70cm | Straight |
| FR/FH-2526W | | | | | | Curved |
| FR/FH-3224 | Triple Lumen | 12Fr | 13 | 12F×15cm | 0.038"×50cm | Straight |
| FR/FH-3224W | | | | | | Curved |
| FR/FH-3225 | Triple Lumen | 12Fr | 16 | 12F×15cm | 0.038"×50cm | Straight |
| FR/FH-3225W | | | | | | Curved |
| FR/FH-3226 | Triple Lumen | 12Fr | 20 | 12F×15cm | 0.038"×60cm | Straight |
| FR/FH-3226W | | | | | | Curved |

Remarks:

1. The product codes in this chart are for HC kits with straight introducer needle configuration.
2. HC kits with Y-shaped introducer needle configuration are also available upon discussion. The product code of HC kit with Y-shaped introducer needle configuration is different from the product code of HC kit with straight introducer needle configuration.Before you order, please clarify which configuration you request, either straight or Y-shaped introducer needle.
3. Pediatric types of HC include double lumen 6.5Fr and 8.5Fr.
4. Adult types of HC include single lumen 7Fr, 8Fr ; double lumen 11.5Fr, 12Fr, 14Fr and triple lumen 12Fr.
5. "FR" in the product code means with soft tip.
6. "FH" in the product code means without soft tip (i. e. with relatively harder tip).
7. Pre-curved catheter is available for adult type in double lumen 11.5Fr, 12Fr, 14Fr.

A.V.Fistula Needle



Features

- 1. Fine polishing process on blade to puncture easily and smoothly.
- 2. Siliconised needle reduces pain and blood coagulation.
- 3. Back eye and ultra thin-walled ensures a high blood flow rate.
- 4. Rotatable wing and fixed wing are available.

| CODE (Single pack) | CODE (Twin pack) | Diameter | Wing | Needle length(mm) | Tube length(mm) |
|--------------------|------------------|----------|-----------|-------------------|-----------------|
| FX-1412S | FX-1412D | 14G | Fixed | 25mm±2.0mm | 300mm±2.0mm |
| FX-1512S | FX-1512D | 15G | Fixed | 25mm±2.0mm | 300mm±2.0mm |
| FX-1612S | FX-1612D | 16G | Fixed | 25mm±2.0mm | 300mm±2.0mm |
| FX-1712S | FX-1712D | 17G | Fixed | 25mm±2.0mm | 300mm±2.0mm |
| FX-1422S | FX-1422D | 14G | Fixed | 32mm±2.0mm | 300mm±2.0mm |
| FX-1522S | FX-1522D | 15G | Fixed | 32mm±2.0mm | 300mm±2.0mm |
| FX-1622S | FX-1622D | 16G | Fixed | 32mm±2.0mm | 300mm±2.0mm |
| FX-1722S | FX-1722D | 17G | Rotatable | 32mm±2.0mm | 300mm±2.0mm |
| FX-1412ZS | FX-1412ZD | 14G | Rotatable | 25mm±2.0mm | 300mm±2.0mm |
| FX-1512ZS | FX-1512ZD | 15G | Rotatable | 25mm±2.0mm | 300mm±2.0mm |
| FX-1612ZS | FX-1612ZD | 16G | Rotatable | 25mm±2.0mm | 300mm±2.0mm |
| FX-1712ZS | FX-1712ZD | 17G | Rotatable | 25mm±2.0mm | 300mm±2.0mm |
| FX-1422ZS | FX-1422ZD | 14G | Rotatable | 32mm±2.0mm | 300mm±2.0mm |
| FX-1522ZS | FX-1522ZD | 15G | Rotatable | 32mm±2.0mm | 300mm±2.0mm |
| FX-1622ZS | FX-1622ZD | 16G | Rotatable | 32mm±2.0mm | 300mm±2.0mm |
| FX-1722ZS | FX-1722ZD | 17G | Rotatable | 32mm±2.0mm | 300mm±2.0mm |

Safety Fistula Needle



Application

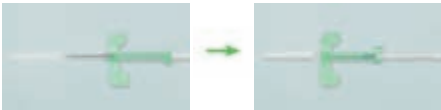
Establish an extracorporeal circulation channel for blood dialysis therapy.

Features and benefits

- 1. The needle will be isolated completely from outside, which can protect medical workers and medical waste cleaners from getting injured and avoid blood-transmitted diseases.
- 2. Simple structure, easy operation, good market acceptance, can replace sharps containers.

Department

Anesthesia, ICU, emergency



- After treatment, pull put the needle, open the buckle and remove the needle to completely wrap the needle in the wing of safety fistula needle.



- Closed buckle, the needle wing is fixed to the neilsbed.

Hemodialyser (Low flux polyethersulfone)



Application

Establish an extracorporeal circulation channel for blood dialysis therapy.

Features and benefits

All tubes are made from medical grade, and all componests are manufactured in original.

- 1. Pump Tube: With high elasticity and medical grade PVC, the shape of tube remains the same after continuous pressing of 10 hours.
- 2. Drip Chamber: several sizes of drip chamber available.
- 3. Dialysis Connector: Extra large designed dialyzer connector is easy to operate.
- 4. Clamp: clamp is made of hard plastic and designed larger and thicker to guarantee sufficient stop.
- 5. Infusion Set: It is convenient to install and uminstall, which ensure precision infusion and safe priming.
- 6. Drainage Bag: closed priming to meet the requirements of quality control, single way drainage bag and double way drainage bag available.
- 7. Customized Designed: Different sizes of pump tube and Chamber to meet the requirements of customers.

In Vitro performance data / technical data

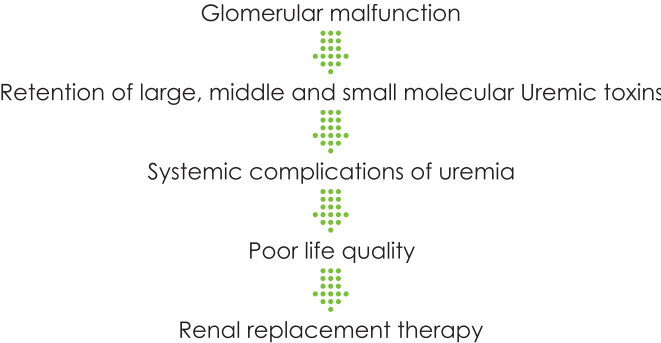
| | A40 | A60 | A80 | A200 |
|-------------------------------------|-----|-----|-----|------|
| Ultrafiltration Coeff.(mL/h x mmHg) | 18 | 20 | 22 | 25 |
| Clearance Q _B =200mL/min | | | | |
| Urea | 183 | 185 | 197 | 192 |
| Creatinine | 172 | 175 | 180 | 185 |
| Phosphate | 142 | 147 | 160 | 165 |
| Vitamin B12 | 91 | 95 | 103 | 114 |
| Clearance Q _B =300mL/min | | | | |
| Urea | 232 | 240 | 247 | 252 |
| Creatinine | 210 | 219 | 227 | 236 |
| Phosphate | 171 | 189 | 193 | 199 |
| Vitamin B12 | 105 | 109 | 123 | 130 |
| Clearance Q _B =400mL/min | | | | |
| Urea | 266 | 274 | 282 | 295 |
| Creatinine | 232 | 245 | 259 | 268 |
| Phosphate | 200 | 221 | 232 | 245 |
| Vitamin B12 | 119 | 124 | 137 | 146 |

Remarks: In Vitro performance: Q_b= 500mL/min, Q_f=10mL/min, T=37°C (EN1283, ISO8637)
Ultrafiltration coefficients: Bovine plasma, TP=60g/L ± 5g/L, TMP=10mm Hg,

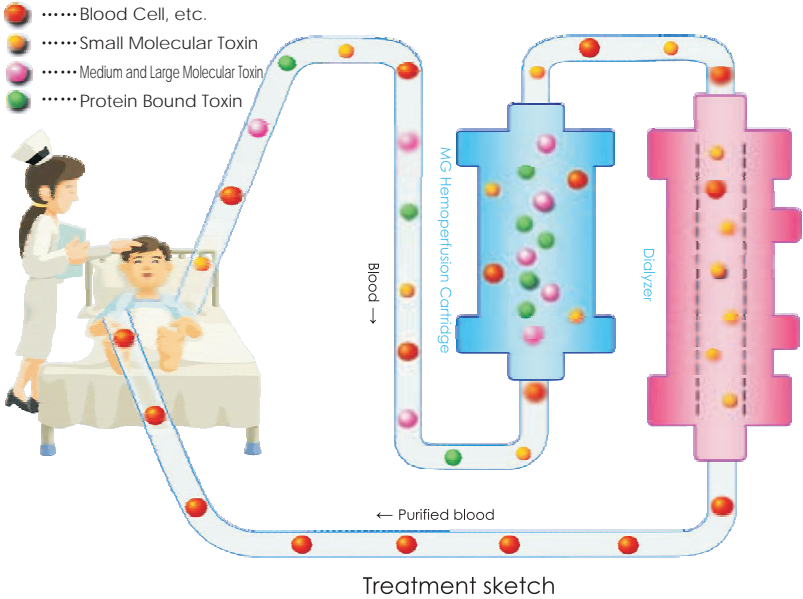
| Effective Surface(m²) | 1.4 | 1.6 | 1.8 | 2.0 |
|--------------------------|------------------|---------|---------|---------|
| Blood flow range(ml/min) | 200—400 | 200—400 | 200—400 | 200-400 |
| Wall thickness/lumen(um) | 40/200 | 40/200 | 40/200 | 40/200 |
| Priming volume(mL) | 78 | 86 | 99 | 108 |
| Membrane material | Polyethersulfone | | | |
| Maximum TMP(mm Hg) | 500 | 500 | 500 | 500 |
| Housing material | polycarbonate | | | |
| Potting compound | Polyurethane | | | |
| Cover material | polycarbonate | | | |
| O-ring | Silicone Rubber | | | |
| Caps | Polypropylene | | | |
| Sterilisation method | Gamma | | | |
| Form of treatment | HD | | | |
| Units per box | 24 | | | |
| Product code | A-40 | A-60 | A-80 | A-200 |

Hemoperfusion Cartridge

End Stage Renal Disease (ESRD)

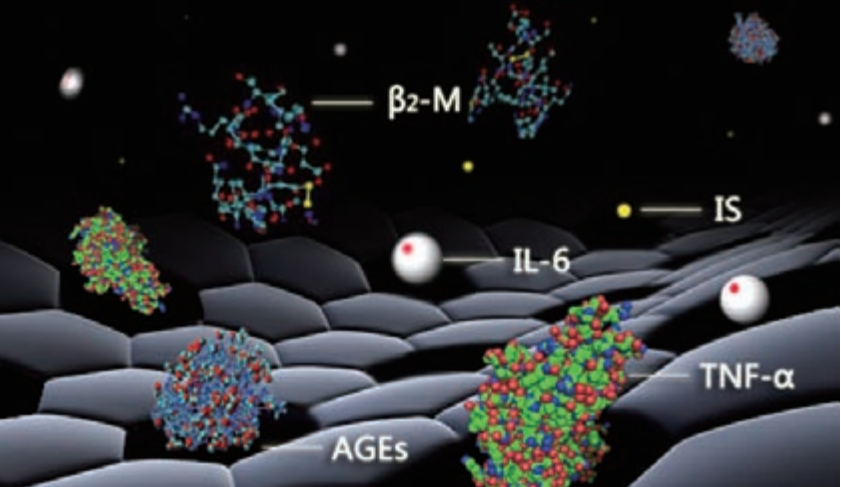


The combined hemodialysis/ hemoperfusion procedure (HD+HP) makes advantage of each other for blood purification, in this way, metabolic products and uremic toxins produced by renal failure patient could be thoroughly removed and the water, as well as electrolyte could be regulated to balance. Eventually, internal environment remains balance and patient's life quality is improved.



Some Toxins of Uremia and Relevant Complications

| Medium and Large Molecular Toxins | | Protein Bound Toxins | |
|---|---|---------------------------------|--|
| β_2 Micoglobulin | Amyloidosis and Carpal Tunnel Syndrome | Advanced Glycation End Products | Amyloidosis and Atherosclerosis |
| Renin, Angiotensin | Intractable Hypertension | Indoxyl Sulfate | Glomerulosclerosis |
| Parathyroid Hormone | Renal Osteopathy, Ectopic Calcification | Glomerular Sclerosis | Cardiovascular Complications |
| Oxidation Protein Products | Atherosclerosis | Leptin | Malnutrition |
| Interleukin 1,6 | Micro Inflammatory | Cresol, Paracresol | Hepatotoxicity |
| TNF- α Tumor Necrosis Factor TNF- α | | Hippuric Acid | Insulin Resistance, Abnormal Glucose Tolerance |

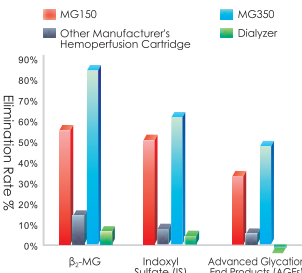


Adsorption Sketch of MG Series Hemoperfusion Cartridge

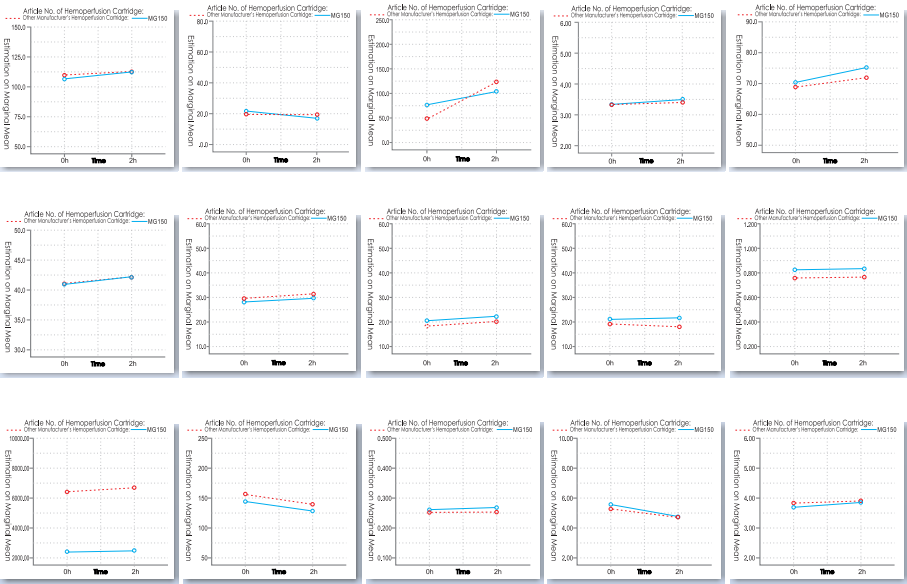
Hemoperfusion Cartridge

Effectiveness Evaluation

| Manufacturer | Elimination Rate of β_2 -MG | Reduction Rate of IS | Reduction Rate of AGEs |
|---|--|--|---|
| Biosun's MG 150 Hemoperfusion Cartridge + Dialyzer | Dialyzer F=284.299 P<0.001 95%CI= 35.9~45.5% | 51.7% F=117.247 P<0.001 95%CI= 90.9~131.8% | 33.0% F=4.807 P<0.031 95%CI= 20.8~423.1% |
| Other Manufacturer's Hemoperfusion Cartridge + Dialyzer | Dialyzer | - | - |
| Biosun's MG350+Dialyzer | Dialyzer F=214.00 P<0.001 95%CI= 66.4~87.8% | 62.3% F=150.032 P<0.001 95%CI= 48.3~67.5% | 47.5% F=36.012 P<0.001 95%CI= 50.7~102.6% |
| Dialyzer | Dialyzer | 4.4% | -2.1% |



Safety Evaluation

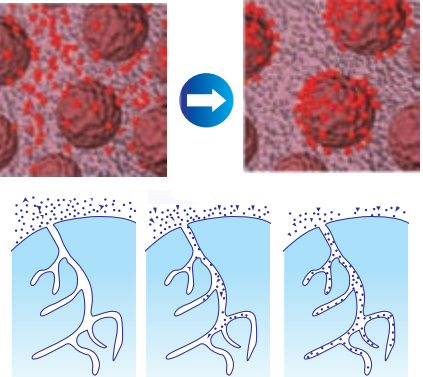


| Specification | Indication |
|---------------|---------------------------|
| MG-150 | ESRD, Acute Renal Failure |
| MG-250 | Poisoned |
| MG-350 | |

Poisoned

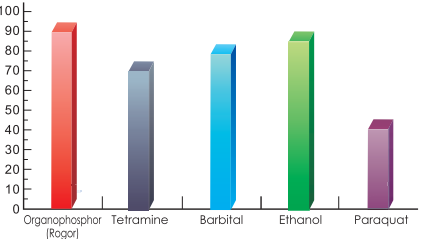
Hemoperfusion is to eliminate the endogenous and exogenous pathogenic substances so as to purify the blood by circulating the blood through the adsorbed device extracorporeally. It can adsorb effectively the fat-soluble medium and large molecular medicine and poison, and medicine and poison with high protein binding rate.

Absorption Mechanism

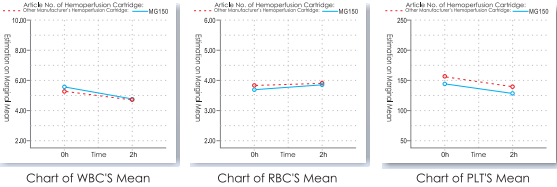


| Category | Medicine or Poison |
|-------------------------|--|
| Drug Poisoning | Sedative, Hypnagogue (Barbital, Sedative and Hypnagogue other than Barbital) |
| | Anxiolytic (Diazepam, etc.) |
| | Antipsychotic Drug (Perphenazine, Chlorpromazine, etc.) |
| | Antineoplastic Drug (Fluorouracil) |
| | Antipyretic Analgesics (Paracetamol) |
| Pesticide Poisoning | Rogor, Paraquat, Dichlorvos |
| Alcohol Poisoning | Methanol, Ethanol, Isopropanol, Glycerol |
| Plant Poisoning | Toadstool, Aconitine, Mushroom, etc. |
| Living beings Poisoning | Fish Gail Bladder, Globefish, Snake Venom, Bee Venom, Scorpion Venom |
| Rodenticide | Tetramine, Fluoroacetamide |
| Heavy Metal Poisoning | Arsenic, Copper, Lead, Hydrargyrum, etc. |

Effectiveness Evaluation



Safety Evaluation



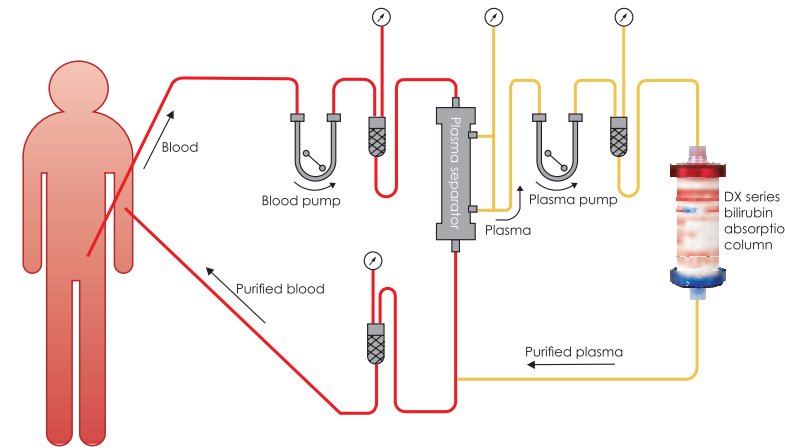
Best Time of Blood Purification Therapy

After poisoned, the time to start therapy will affect the treatment result, The principle is that once blood purification is needed, start treatment sooner the better. When acute renal failure resulting from poisoning, or acute drug poisoning on original renal failure occur, hemoperfusion and hemodialysis can be applied together. This can not only eliminate the water and uremia toxins, correct the disorder of electrolyte, acid and alkali, but also eliminate special poisons.

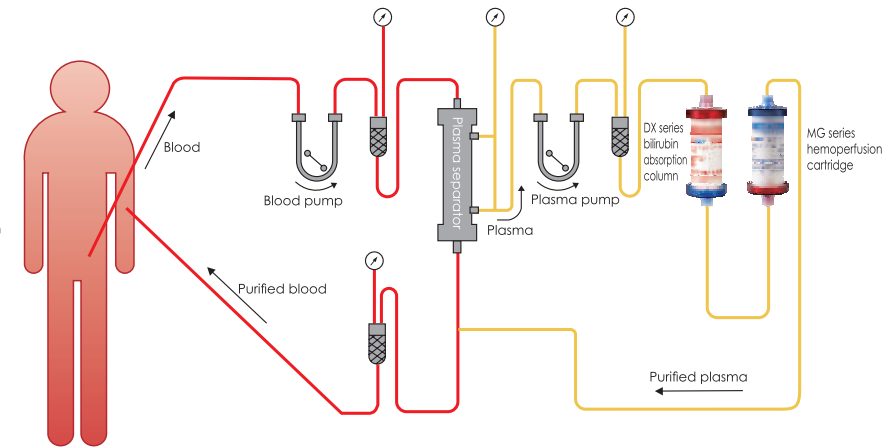
Highly Specific Bilirubin Absorption Column Treatment Sketch



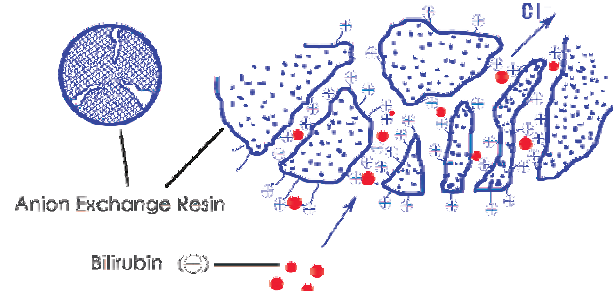
Plasma Bilirubin Absorption: After separated, the plasma is purified by passing through DX Series bilirubin absorption column and subsequently return back to human body.



Double Plasma Molecule Absorption System (DPMAS): After separated, the plasma successively passes through DX Series bilirubin absorption column and MG hemoperfusion cartridge and subsequently return back to human body.



Absorption Mechanism

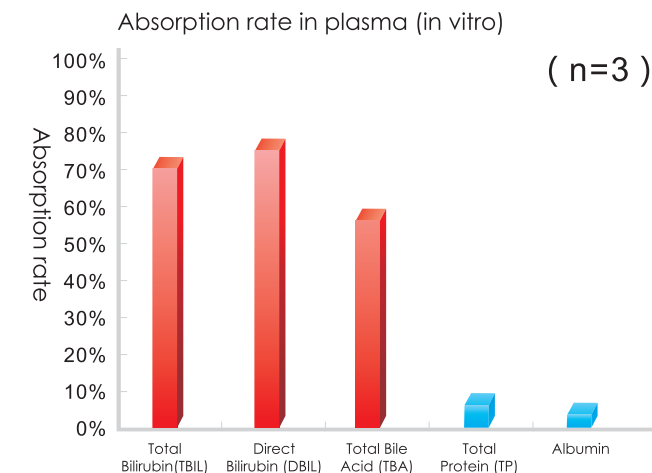


The function of bilirubin adsorption is decided by electrostatic interaction between the negative charge of the carboxyl group of bilirubin and the positive charge of quaternary ammonium salt of the anion exchange resin.

Indication for Use

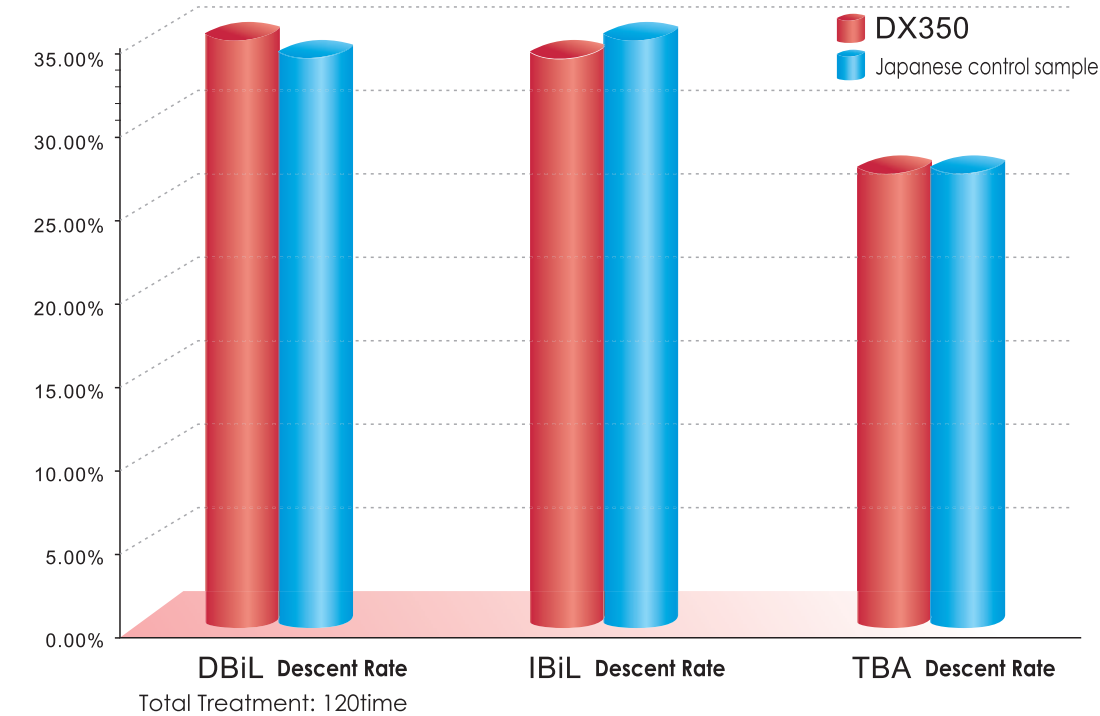
DX Series bilirubin adsorption column is designed for treatment of fulminant hepatitis, post-operative liver failure, primary biliary cirrhosis, hyperbilirubinemia and Bile acid syndrome. the adsorption of bilirubin and bile acid from plasma and is an effective and safe approach for hemopurification of the patients who have hepatopathy such as fulminant hepatitis, post-surgery hepatic failure, primary biliary cirrhosis and hyperbilirubinemia.

Vitro Test Result



Vitro Test Condition:
Absorption column: one pass (1/350) Sample: plasma 2.4L (Equivalent volume) Flow rate: 20mL/min(Equivalent rate)

Highly Specific Bilirubin Absorption Column Clinical Study of Plasma Bilirubin Absorption

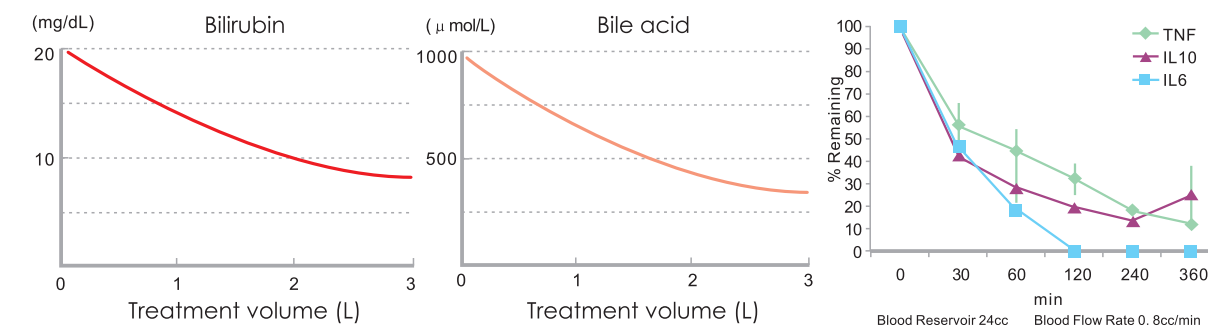


Result of clinical studies in Shanghai Changzheng Hospital, Foshan Affiliated Hospital of Sun Yat-sen University and Guangzhou Eighth People's Hospital: There was a significant decline for every indicator after absorption treatment.

Conclusion: DX350 is not inferior to Japanese control sample, it has good capability of clearing bilirubin and bile acid, the patients liver function is improved after treatment and the clinical symptom is relieved at different level, it's effective after integrated clinical evaluation. Simultaneously, it has excellent biocompatibility.

Double Plasma Molecular Absorption System (DPMAS) Clinical Study

The change of bilirubin concentration before and after Plasma absorption



Result of Clinical Study: Bilirubin level declined significantly after DPMAS treatment, there was also statistical significance in terms of inflammatory mediators clearance.

The combined treatment of bilirubin absorption column and MG Series Hemoperfusion cartridge, Double Plasma Molecular Absorption enable to specifically clear bilirubin, meanwhile is capable of eliminating inflammatory mediators, relieving the inflammatory symptom, immunoreaction, and improving prognosis.

Infusion Products

Needle Free Connector



1. Swab the top of the ABLE® Needle Free Connector with an alcohol pad for at least three seconds or per your facility's protocol.



2. Insert the syringe or connect I.V. tubing directly to the ABLE® Needle Free Connector and turn clockwise.



3. Turn the syringe or I.V. set counterclockwise to remove. Replace the ABLE® Needle Free Connector according to your facility's protocol.

Features:

1. Transparent housing material: Polycarbonate or Copolyester.
2. Metal-free & MRI-compatible.
3. Latex-free.
4. ISO 10993 compliant.
5. Multiple insertion at least 100 times/day.
6. Priming Volume: 0.09ml.
7. Perfect flowing rate: 350 ml/min under one meter water pressure, tested by Baihe Technical Team.
8. Produced under by GMP: Baihe Medical is an ISO9001, ISO13485 registered manufacturing facility.

Infusion Products

Y-port Valves



Material: Polycarbonate or Copolyester
Size: ID 4.01mm, 3.6mm

Tube End Valves

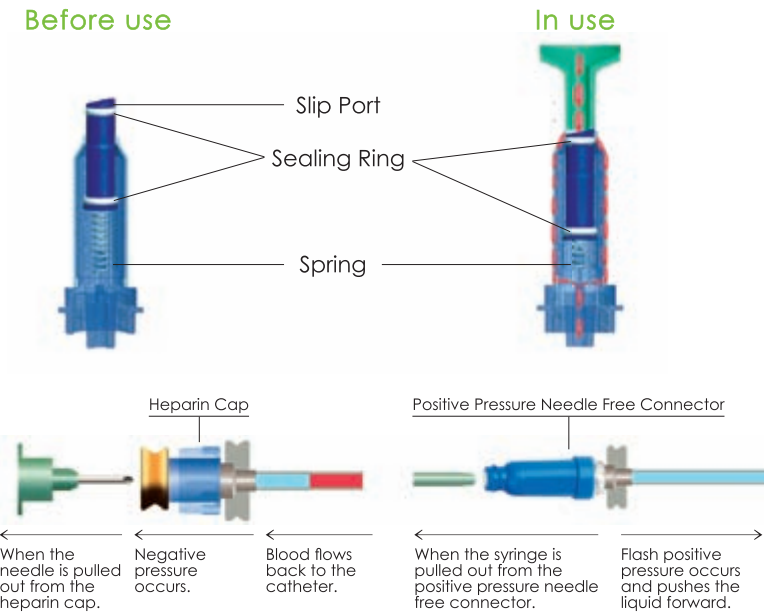


Material: Polycarbonate or Copolyester
Size: ID 2.0mm, 2.5mm, 2.8mm, 3.7mm, 4.1mm

Positive Pressure Needle Free Connector



- Features:**
- 1. Patent design of positive pressure avoids back flow of blood during removal of syringe. This will help to prevent blood clot at the catheter tip inside the blood vessel.
 - 2. The housing is impregnated with PC Ag+ which helps to lower infection.
 - 3. Protruding design of the stalk at the injection port follows infection control protocol.
 - 4. High quality spring ensures multiple insertion at the injection site without leaking.
 - 5. Two sealing rings at the upper and lower end of the stalk keeps the connector out air, fluid and outside substance.
 - 6. The straight flow of fluid path creates less turbulence and complies with proper transfusion protocol.
 - 7. The holding capacity of remaining fluid is less than 0.06ml.



| Product code | Specification |
|--------------|---|
| FL-NF01-005 | Positive Pressure Needle Free Connector |

Neutral Needle Free Connector



Needle free technology Plus Neutral fluid displacement designed helps reduce reflux-related occlusions, low measured displacement and blood reflux.

- Features**
- 1. Self-opening split septum results in full connectivity.
 - 2. Flat and smooth surface promotes easy and complete swabbing.
 - 3. Straight fluid path ensures large volume (Flow rate 160ml/min).
 - 4. Clear housing provides good observation.

Design and Operation Principle:

Connected with syringe, valve and leading mandril was pressed and the path opened, liquid pass the grove through the leading mandril, disconnected the syringe, the leading mandril springback and seal the valve path, the liquid stuck no flowing back.



| TECHNICAL DATA | |
|----------------------|---------------------------|
| Residual Volume | 0.08ml |
| Flow Rate at Gravity | 160ml/minute |
| Back Flow | 0.003ml |
| Size | Width:1.2cm; Length:2.6cm |
| PSI | 100 |
| Sterilization | EO |
| Latex Free | Yes |
| DEHP Free | Yes |

| COMPATIBILITY | |
|---------------|-----|
| Alcohol | Yes |
| Lipids | Yes |
| Chlorhexidine | Yes |
| Chemotherapy | Yes |
| Blood | Yes |
| MRI | Yes |

I.V.Cannula



Application:

For all types of patients with peripheral venous infusion and blood samples collected. Especially for the following groups: Newborns, infants , young children, puberty men, pregnant women, lactating women, chemotherapy patients, patients with lipid or alcohol therapy.

Departments

Applicable to general departments, the product does not contain plasticizers especially for pediatrics.

Features

- 1. New generation of bio-materials polyurethane does not contain plasticizers which has been detected by the State Food and Drug Administration.
- 2. X-ray impermeability
- 3. Configuration imported stainless steel needle with small puncture force to reduce the pain of patients.
- 4. Complete specifications with 26G / 24G / 22G / 20G / 18G
- 5. Automatic positive pressure, fluid can be filled instantaneously as it separates from syringe and infusion device, positive pressure sealing effect occurred..

| | | |
|-------------------|---------------|------------------|
| Dark green 18G | Pink 20G | Navy blue 22G |
| Yellow 24G | Purple 26G | |

Extension Tubes with Injection Site Adapters



Infusion Set with Needleless Adapters

This device is designed to meet the needs of general I.V. Therapy, Anaesthesia Cardiovascular, ICU&CCU, Recovery&Oncology.

Safe for infusion IV medication including most high risk anti-neoplastics, or aspirating blood without risk of hemolysis.

| Product Code | Catheter Diameter |
|--------------|--|
| FL-TF01-107 | One-Way Extension Tube with One Normal Needle Free Connector |
| FL-TF01-105 | One-Way Extension Tube with One Positive Pressure Needle Free Connector |
| FL-TF02-207 | Two-Way Extension Tube with Two Normal Needle Free Connectors |
| FL-TF02-205 | Two-Way Extension Tube with Two Positive Pressure Needle Free Connectors |
| FL-TF03-307 | Three-Way Extension Tube with Three Normal Needle Free Connectors |
| FL-TF03-305 | Three-Way Extension Tube with Three Positive Pressure Needle Free Connectors |
| FL-TF04-407 | Four-Way Extension Tube with Four Normal Needle Free Connectors |
| FL-TF04-405 | Four-Way Extension Tube with Four Positive Pressure Needle Free Connectors |

Three Way Stopcock



- Advantages:**
1. Clarity appearance for easy to observe exhaust and increase security of infuse.
 2. Easiness for use and rotatable arrow indicate the flow direction.
 3. Not produce vortex and reduce thrombus.
 4. Excellent pressure resistance and solution compatibility.
 5. CE certified.

- Packing Information:**
1. 2000 PCS/ Carton
 2. Carton size: 46x54x72CM

| Specification | Product Code |
|---------------|-------------------------------|
| FS-3002 | Blue color Three-way Stopcock |
| FS-3001 | Red color Three-way Stopcock |

Extension Tubes



Extension Tube with Stopcock



Screw Extension Tube



Mini-Quantity Infusion Extension Tube (OD:2.0mm)



T-Extension Tube

Nasogastric Feeding Tube



1. PU-made
Excellent Biocompatibility
Acid-resistance



2. Radio-opaque



3. Lateral eye for large flow



4. Prevent food regurgitation



5. Guide wire for easy insertion

Composition:
Disposable nasogastric feeding tube is composed of a long tube and guide wire, the long tube comprises the connecting part and tubing with lateral eyes and the guide wire comprises connector and guide wire.

Intended use:
Apply to carry and deliver nutrition and medicine to the stomach.



5Fr



6Fr



8Fr



10Fr



12Fr



14Fr



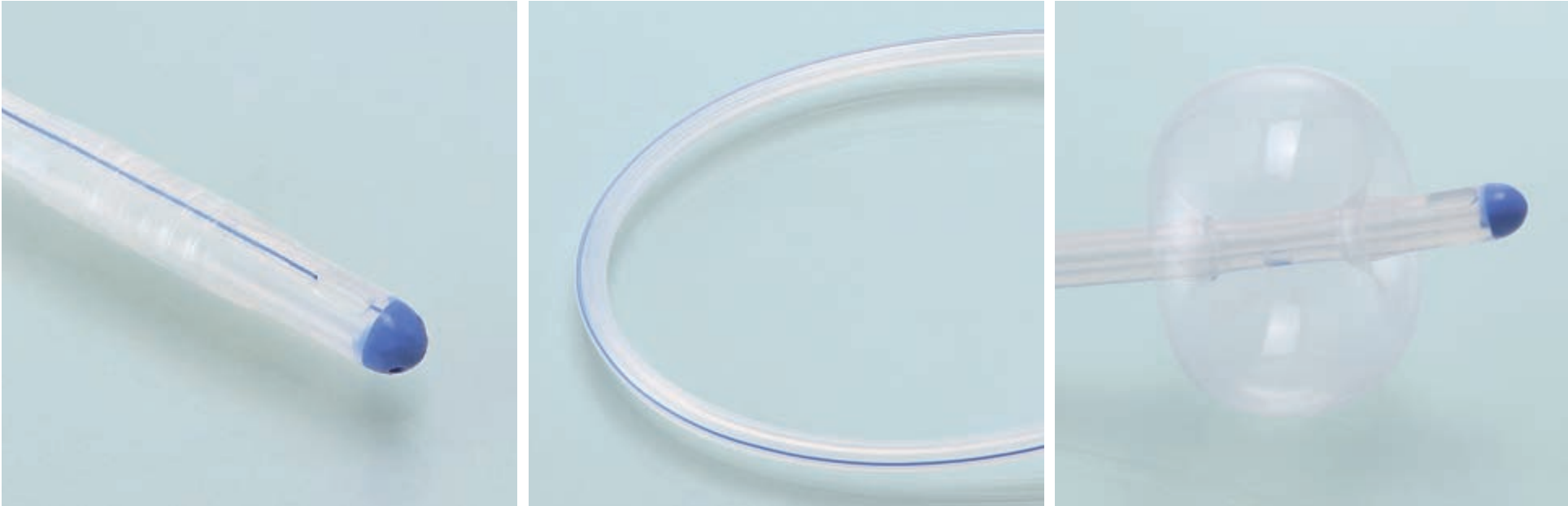
16Fr

Silicone Foley Catheter



- Features:**
- 1. It is made from medical grade and imported silicone material.
 - 2. The silicone foley catheter has a larger inner lumen for better drainage than the same size one made from latex of PVC.
 - 3. No urate crystal and irritation occurs during intubation, thus catheter-associated urethral infection can be avoided.
 - 4. Silicone foley catheter is widely accepted because of better biocompatibility and indwelling period can be 30 days, which can reduce trauma to urethra caused by repeated intubation.

Features:



Atraumatic, soft and round tip with two lateral eyes for enhancing patient comfort. Radio opaque line throughout the length for X-ray visualization. It can avoid leakage of urine and tube dislodging.

| Product Code | Description | Size(Fr) | Length(cm) | Balloon capacity(cc) | Color code |
|--------------|-------------|----------|------------|----------------------|------------|
| FX-010631 | 1 way | 6 | 31 | / | / |
| FX-010831 | 1 way | 8 | 31 | / | / |
| FX-011041 | 1 way | 10 | 41 | / | / |
| FX-011241 | 1 way | 12 | 41 | / | / |
| FX-011441 | 1 way | 14 | 41 | / | / |
| FX-011641 | 1 way | 16 | 41 | / | / |
| FX-011841 | 1 way | 18 | 41 | / | / |
| FX-020631 | 2 way | 6 | 31 | 1.5-3mL | Green |
| FX-020831 | 2 way | 8 | 31 | 3-5mL | Blue |
| FX-021031 | 2 way | 10 | 31 | 3-5mL | Black |
| FX-021240 | 2 way | 12 | 40 | 5-15mL | White |
| FX-021440 | 2 way | 14 | 40 | 5-15mL | Green |

| Product Code | Description | Size(Fr) | Length(cm) | Balloon capacity(cc) | Color code |
|--------------|-------------|----------|------------|----------------------|------------|
| FX-021640 | 2 way | 16 | 40 | 5-30mL | Orange |
| FX-021840 | 2 way | 18 | 40 | 5-30mL | Red |
| FX-022040 | 2 way | 20 | 40 | 5-30mL | Yellow |
| FX-022240 | 2 way | 22 | 40 | 5-30mL | Violet |
| FX-022440 | 2 way | 24 | 40 | 5-30mL | Blue |
| FX-022640 | 2 way | 26 | 40 | 5-30mL | Pink |
| FX-031640 | 3 way | 16 | 40 | 5-30mL | Orange |
| FX-031840 | 3 way | 18 | 40 | 5-30mL | Red |
| FX-032040 | 3 way | 20 | 40 | 5-30mL | Yellow |
| FX-032240 | 3 way | 22 | 40 | 5-30mL | Violet |
| FX-032440 | 3 way | 24 | 40 | 5-30mL | Blue |
| FX-032640 | 3 way | 26 | 40 | 5-30mL | Pink |

Wound Care Products



Alginate Wound Dressing

Alginate Wound Dressing is an advanced wound dressing manufactured from sodium alginate extracted from natural seaweeds. When in contact with a wound, calcium in the dressing is exchanged with sodium from wound fluid turning the dressing into a gel. This maintains a moist wound healing environment which is good for the recovery of exuding wounds and helps with the debridement of sloughing wounds. The gel forming property of an alginate dressing protects against bacterial invasion, a property which makes alginate an ideal wound dressing for faster tissue regeneration and healing in exuding wounds. The release of calcium ions can also accelerate the blood coagulation process thereby further aiding healing leading to shorter treatment times.

Product Characteristics

High Absorbency: absorbs large amounts of wound exudate then forms a gel to protect the wounds and encourage dressing, on average, up to 50ml of exudate can be produced by a wound over 24 hours period. An alginate wound dressing has the capacity to absorb up to 10-20 times of its weight avoiding contamination and maceration of healthy surrounding skin.

Wet Strength: most alginate wound dressing can be easily removed in one piece without leaving any foreign substance or causing pain or secondary injury.

Low infection Rates: Moisture and acidic environment are conducive to neutrophils' activities, further enhancing the potential for reducing the viability of bacteria in the wound area.

Gel-forming Property: After absorption of exudates, the exchange of calcium in the dressing and sodium from wound fluid forms a stable gel that can maintain a moist wound healing environment promoting the re-generation and new growth of skin, speeding up wound healing.

Haemostasis Function: the release of calcium ions can trigger the formation of prothrombin activator which serves as an important ingredient in accelerating the haemostasis process.

Pain Reducing: owing to the protection of gels, peripheral nerves within the wound bed are less likely to be stimulated by external processes so there is potential for pain reduction.

Cost Reducing: The change frequency of advanced wound dressings can be significantly therefore cost savings can be achieved in the long run even though the unit cost of an advanced wound dressing is higher than traditional materials. Alginate is easy to use, has good air permeability and biocompatibility, and can be degraded and absorbed by human tissue. The is less pain and skin sensitivity compared to traditional materials.

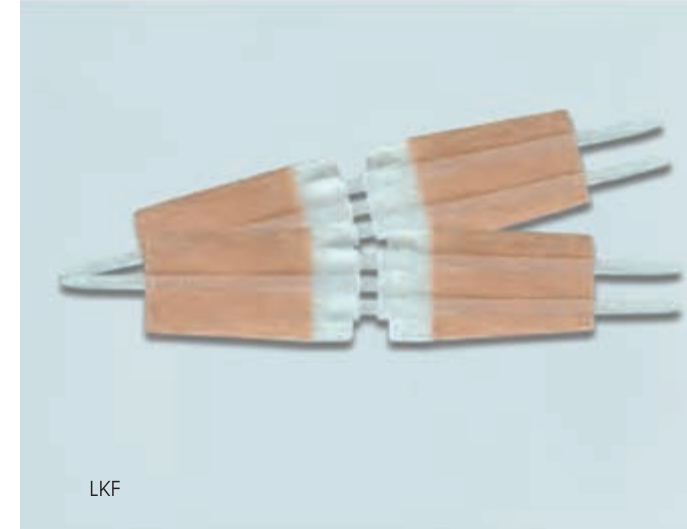
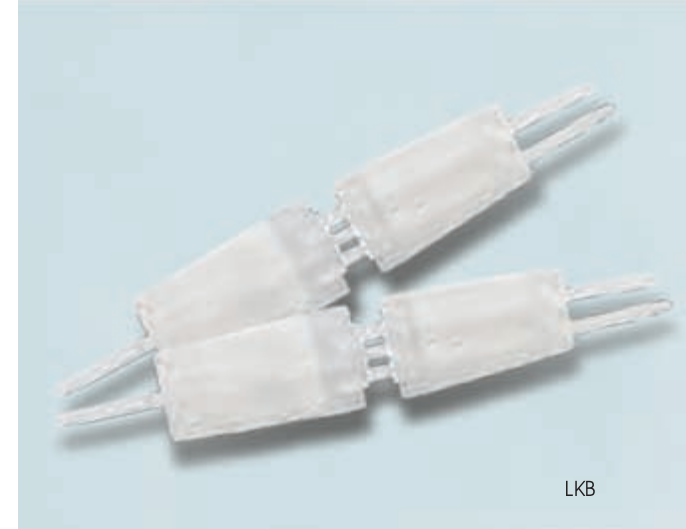
Product range

Alginate Flat: 5cm x 5cm, 10cm x 10 cm, 10cm x 20cm, 15cm x 15 cm

Alginate Ribbon or rope: 2g x 30cm, 2.5g x 30cm, 5 g x 30cm

Non-standard sizes can be provided according to requirements of customers.

Wound Closure Device



Product Description

SEQUA™ hold wound closure device consists of a pair of polypropylene hasps with two adhesive panels. The adhesive panels are porous nonwovens coated with a pressure-sensitive hypoallergenic adhesive.

It is a novel device for the quick and easy closure of most acute wounds, for example lacerated and surgical wounds.

The device is designed to allow for a non-invasive closure of a wound and to encourage a tight closure of the wound for an early and successful healing. The non-invasive technique reduce tissue trauma and improves patient comfort, and possibly cause less scarring after healing.

Features

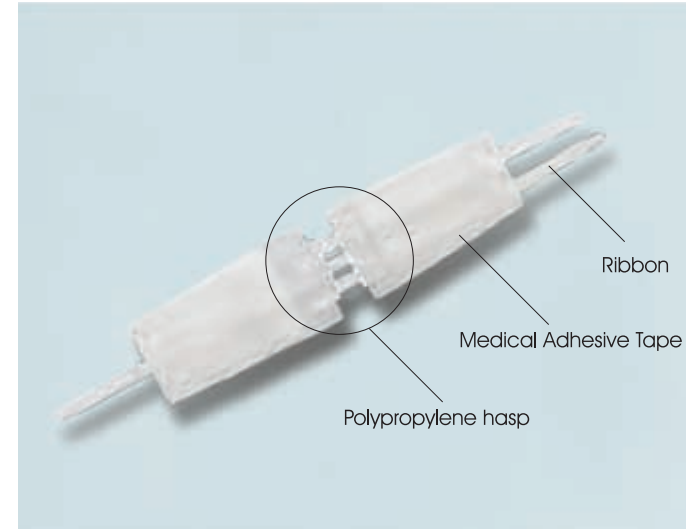
SEQUA™ hold wound closure device is indicated for the closure of acute wounds such as lacerations and surgical subcutaneous suture operations.

- Patented technology
- Non-invasive closure, no sutures, less scar

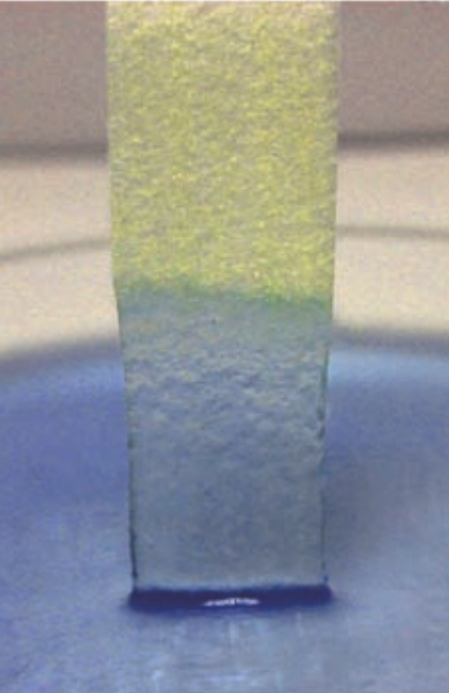
- Quick to apply
- Easy to use

Application:

1. For patients with deep wounds, subcutaneous suture operation can be performed according to local clinical practice.
2. Clean and dry the skin around the wound, making the wound edges as neat as possible.
3. Take the SEQUA™ hold wound closure device out of the package, peel the hasp off the liner by lifting is from the ribbon ends.
4. Position the device so that the two adhesive panels sit on the two sides of the wound.
5. Press the adhesive panel with your finger gently along the direction of the ribbons so that the adhesive panel adheres firmly on the skin.
6. Apply the next hasp in the same way so that the gap between the hasps is about 2mm.
7. Use both hands to hold the ribbons of the hasp and to tighten the hasp gently until the hasps are locked to close the wound.
8. Cut off all long ends from the ribbons.
9. Apply a SEQUA™ film PU film dressing or another secondary dressing to protect the hasp and wound.
10. The secondary dressing can be removed for observation. A new secondary dressing must be applied after observation.
11. When the wound is healed, remove the hasp by lifting either the side of the adhesive panel and peel from the wound gently. Care must be taken to avoid damaging of the newly healed wound.



Chitosan



Chitosan

UMT's SEOUA™ san chitosan wound dressing consists of 100% chitosan fibres. Chitosan is a naturally-occurring starch (polymer) derived from the shells of crustaceans. SEOUA san is a soft highly absorbent dressing which gel when in contact with wound exudates and provide most environment for optimum healing.

UMT's SEOUAT™ san Chitosan wound dressing has the absorbency and gelling characteristics similar to carboxymethyl cellulose but with additional benefits of being haemostatic and bacteriostatic are important to wound healing process.

Indications:

SEOUA™ san chitosan wound dressing can be used in the management of moderate to heavily exuding chronic and acute wounds, and may be used to control minor bleeding in superficial wounds.

- Pressure ulcers
- Venous leg ulcers
- Diabetic foot ulcers
- Cavity wounds
- Donor sites and graft sites
- Surgical wounds (e.g. postoperative wounds left to heal by secondary intention)
- Skin abrasions and lacerations
- Superficial and partial-thickness burns
- Exudate absorption in oncology wounds (e.g. fungating cutaneous tumours, cutaneous metastases and Kaposi's sarcomas).

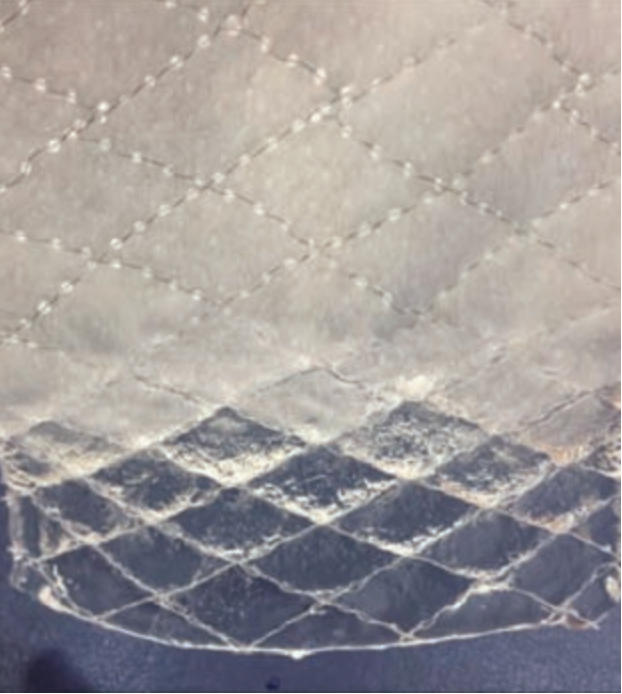
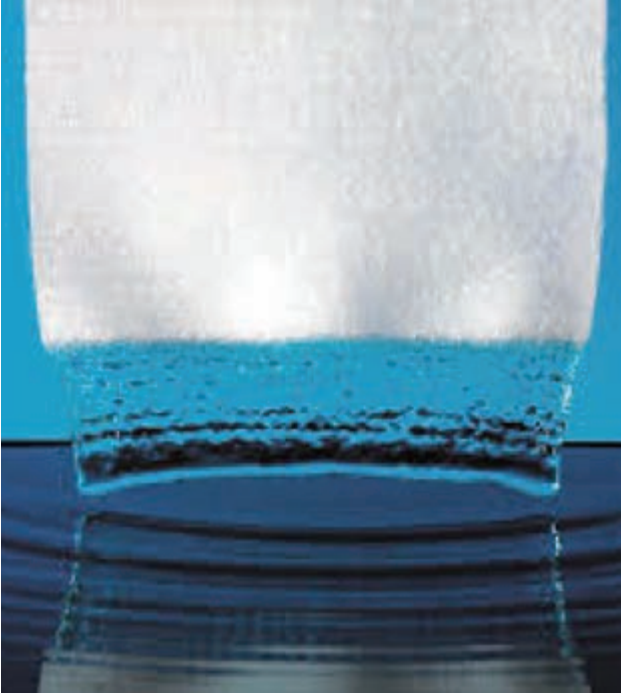
Features and Benefits

- Absorbency
- Bacteriostatic
- CE Marked

Order Information

| Specification cm | Pack Qty |
|------------------|-----------------|
| 5x5 | 10 pcs / carton |
| 10x10 | 10 pcs / carton |
| 10x12.5 | 10 pcs / carton |
| 10x20 | 10 pcs / carton |
| 15x15 | 10 pcs / carton |
| 15x25 | 10 pcs / carton |
| 2.5x30 | 10 pcs / carton |
| 2.5x45 | 10 pcs / carton |
| 20x30 | 10 pcs / carton |

Carboxymethyl Cellulose(CMC)



CMC Wound dressing

UMT's CMC wound dressing (SEOUA™cel) is a soft nonwoven pad or ribbon dressing made from 100% carboxymethyl cellulose (CMC) fibers, CMC fibrous wound dressing is proven technology for absorbent wound dressing. SEQUA™cel CMC wound dressing forms clear gel when in contact with aqueous solution. The gelling allows the dressing to lock the moisture within the dressing providing the moist environment optimum healing.

Re-enforced CMC dressing

UMT's re-enforced CMC wound dressing enhances the integrity especially the wet strength of the CMC wound dressing. This allows an integral removal of the dressing and makes the dressing more suitable for the application in the management of cavity wounds.

Features and Benefits

- Coherent gelling
- Highly absorbent
- Lock bacteria
- Maintains moisture balance in the wound bed
- Easy conformity to minimizes "dead space" where bacteria can grow
- Excellent wet strength enables removal in one piece
- CE Marked

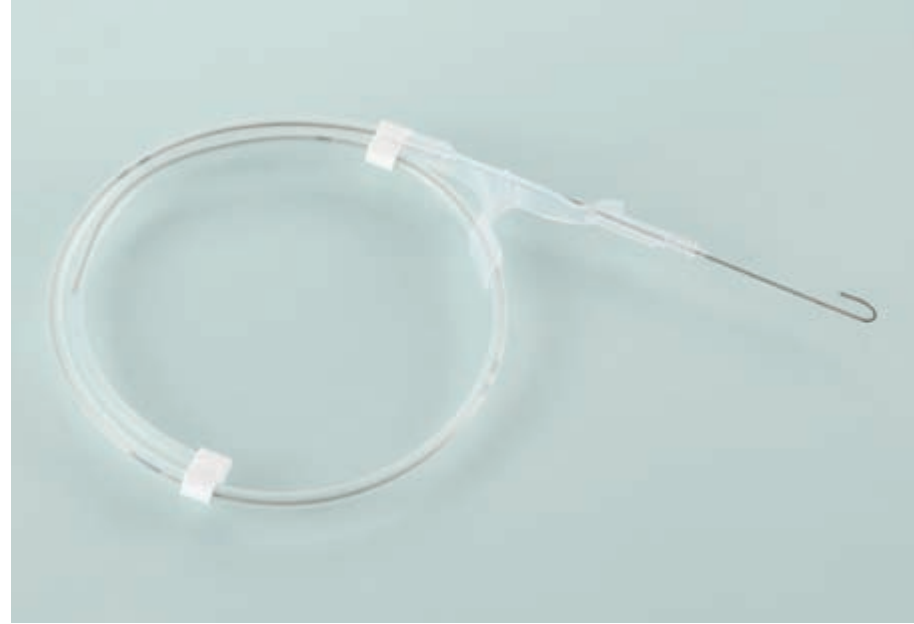
Indications:

- Chronic wounds: leg ulcers, pressure sores, diabetic ulcers.
- Acute wounds: donor sites, abrasions, lacerations, post-surgical wounds and first-and second-degree burns

Order Information

| Specification cm | Pack Qty |
|------------------|-----------------|
| 5x5 | 10 pcs / carton |
| 10x10 | 10 pcs / carton |
| 10x12.5 | 10 pcs / carton |
| 10x20 | 10 pcs / carton |
| 15x15 | 10 pcs / carton |
| 15x25 | 10 pcs / carton |
| 2.5x30 | 10 pcs / carton |
| 2.5x45 | 10 pcs / carton |
| 20x30 | 10 pcs / carton |

Nitinol Guide Wire



Flexible



Kink Resistance

Features:

1. Shape memory alloy core material, excellent resilience, kink resistance.
2. Breaking force of ABLE® guidewire tip: $\geq 40 \sim 50\text{N}$, while ISO 11070:1999 Standard: $\geq 10\text{N}$.
3. Include and exceed the main features of stainless steel guide wire.

Sizes: 0.018", 0.021", 0.025", 0.028", 0.032", 0.035", 0.038"

Length: 50cm - 150cm

"J" Tip end and straight soft tip end for choice.

Stainless Steel Guide Wire



Smooth Solder Joint



Calibration Details



Complete Specifications

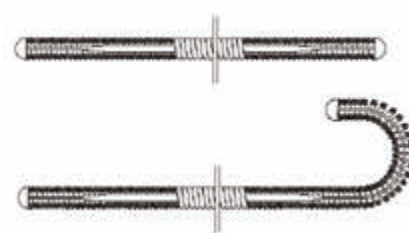
Features:

1. Smooth hemisphere heads, reduce the vascular wall damage.
2. Appropriate taper, perfect combination of tip.
3. Excellent brace force supported by the SS304 core.
4. Clear scale indication for better observation.

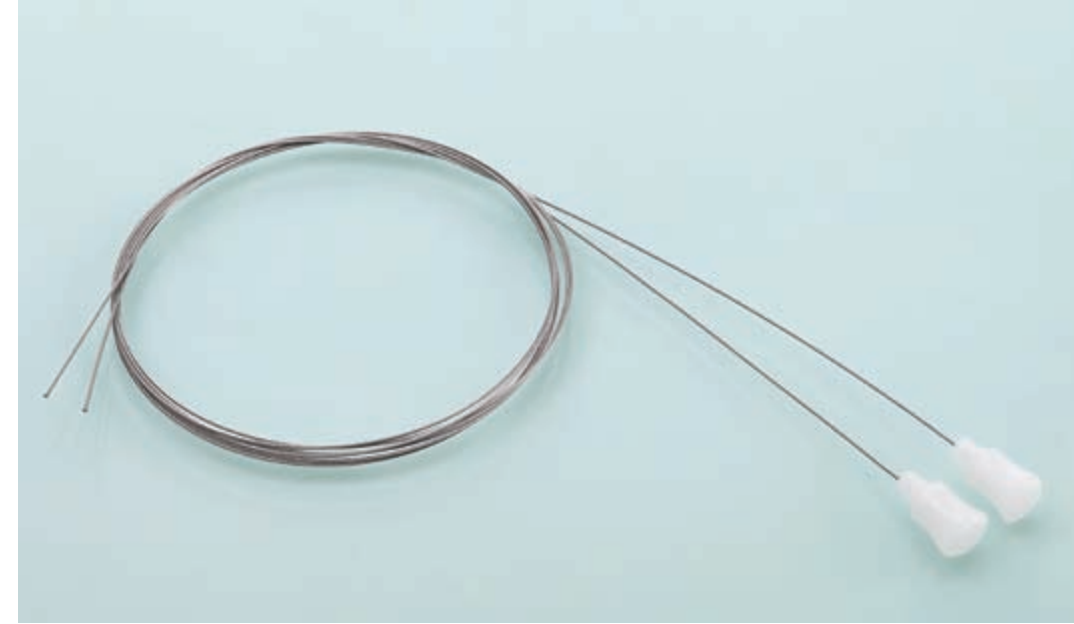
Sizes: 0.018", 0.021", 0.025", 0.028", 0.032", 0.035", 0.038"

Length: 50cm - 150cm

"J" Tip end and straight Soft tip end for choice.



Guide Wire for Nasogastric Feeding Tube



Smooth Solder Joint



Guide Wire Connector

Advantages:

1. Superior torque control, easier tube placement;
2. Decrease the risk of tube blocking;
3. Smooth surface, less traumatic on the mucosa and blood vessel;
4. Convenient operation and nursing.

Sizes: 0.7mm; 1.0mm

Length: 30cm-300cm

PTFE Guide Wire



Advantages:

1. PTFE coating;
2. Excellent device compatibility;
3. Excellent biocompatibility;
4. Have the antithrombotic capability;
5. Both floppy ends attain good pliancy;
6. Tip shape retention design, good resilience.

Individual Catheter



Individual Catheters and Components are available for customized design.



Heparin Cap



Guide Wire Advancer



Introducer Needle



Dilator



Introducer Syringe



Scalpel



Fixation with Wings



Slide Clamp



